
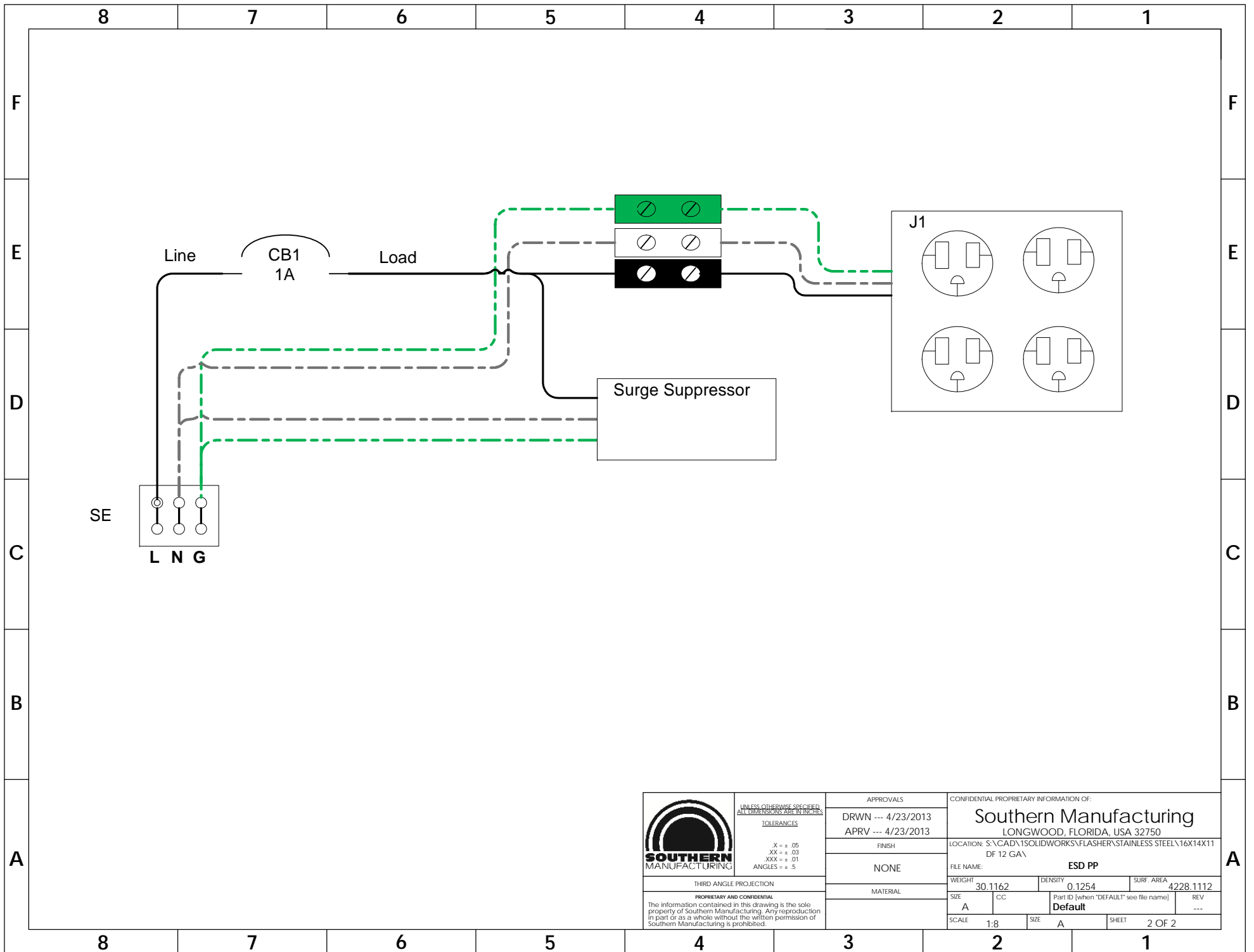



NOTES

1. CABINET IS CONSTRUCTED FROM 12 GAUGE TYPE 304 STAINLESS STEEL WITH A #3 FINISH AND IS WALL / POLE MOUNTED .
2. CABINET HAS A .125" THICK ALUMINUM BACK PANEL (16.5" H X 14.5" W).
3. BACK PANEL HAS TWO 35MM X 15MM DIN RAIL (ONE 6" AND ONE 15" LONG) , ONE RECEPTACLE (TWO DUPLEX 120 VAC , 15 A IN HANDY BOX WITH COVER) , CIRCUIT BREAKER (SERVICE DISCONNECT) AND A TERMINAL BLOCK (L,N,G GROUND PLATE) .
4. DOOR HAS A 14 GA STAINLESS STEEL CONTINUOUS HINGE , A 3/4" DIA PAD-LOCKABLE STAINLESS STEEL HANDLE , THREE POINT LATCHING , AND IS SEALED WITH .260" THICK CLOSED CELL NEOPRENE GASKET.
5. CABINET CONFORMS TO OREGON DOT SPECIFICATIONS FOR BLUETOOTH EQUIPMENT CABINETS SPS16252 ,OR217 .
6. ALL HARDWARE IS STAINLESS STEEL.
7. CABINET IS RATED 3R AND IS UL LISTED .

 <p>UNLESS OTHERWISE SPECIFIED ALL DIMENSIONS ARE IN INCHES</p> <p>TOLERANCES</p> <p>X = ± .05 XX = ± .03 XXX = ± .01 ANGLES = ± .5</p> <p>THIRD ANGLE PROJECTION</p> <p>PROPRIETARY AND CONFIDENTIAL The information contained in this drawing is the sole property of Southern Manufacturing. Any reproduction in part or as a whole without the written permission of Southern Manufacturing is prohibited.</p>	APPROVALS		CONFIDENTIAL PROPRIETARY INFORMATION OF:		
	DRWN --- 4/23/2013 APRV --- 4/23/2013		Southern Manufacturing LONGWOOD, FLORIDA, USA 32750		
	FINISH		LOCATION: S:\CAD\1SOLIDWORKS\FLASHER\STAINLESS STEEL\16X14X11 DF 12 GA\		
	NONE		FILE NAME: FS-18X16X11-SUBMITTAL		
MATERIAL		WEIGHT 30.1162	DENSITY 0.1254	SURF. AREA 4228.1112	
		SIZE A	CC	Part ID (when 'DEFAULT' see file name)	REV
		SCALE 1:8	SIZE A	Default	---
				SHEET 1 OF 2	



 <p>SOUTHERN MANUFACTURING</p> <p>THIRD ANGLE PROJECTION</p> <p>UNLESS OTHERWISE SPECIFIED, ALL DIMENSIONS ARE IN INCHES.</p> <p>TOLERANCES</p> <p>.X = ± .05 .XX = ± .03 .XXX = ± .01 ANGLES = ± .5</p> <p>PROPRIETARY AND CONFIDENTIAL The information contained in this drawing is the sole property of Southern Manufacturing. Any reproduction in part or as a whole without the written permission of Southern Manufacturing is prohibited.</p>	APPROVALS		CONFIDENTIAL PROPRIETARY INFORMATION OF:		
	DRWN --- 4/23/2013 APRV --- 4/23/2013		Southern Manufacturing LONGWOOD, FLORIDA, USA 32750		
	FINISH		LOCATION: S:\CAD\1SOLIDWORKS\FLASHER\STAINLESS STEEL\16X14X11 DF 12 GA\		
	NONE		FILE NAME: ESD PP		
MATERIAL		WEIGHT	DENSITY	SURF. AREA	
		30.1162	0.1254	4228.1112	
		SIZE	CC	Part ID (when 'DEFAULT' see file name)	
		A		Default	
		SCALE	SIZE	SHEET	
		1:8	A	2 OF 2	



**OREGON DEPARTMENT OF TRANSPORTATION
OR217: ACTIVE TRAFFIC MANAGEMENT
00995.259(b) BLUETOOTH EQUIPMENT
CABINET**

18"H x 16"W x 11"D Pole Mount NEMA 3R Enclosure

1. Proudly Made in America at our ISO 9001:2008 registered facility
2. Constructed to NEMA 3R and UL 508 Listed
3. Conforms to Oregon Department of Transportation specifications for Bluetooth equipment cabinets SPS16252, OR217 ATMC, Section 00995.24)(b) dated 10/25/2012
4. Fabricated from 12 gauge "thick type 304 stainless steel with #3 finish
5. Cabinet is designed for pole mounting with top and bottom tabs
6. Single front door with double flanges opening
7. Door has a 14 gauge continuous stainless steel hinge
8. Gasket, .260" thick closed cell neoprene
9. Three point latching with center can and top and bottom strikers
10. Handle, stainless steel with pad lockable hasp
11. Screened vent louver provided in each side
12. Mounting Tab at top and bottom
13. Back panel constructed from .125 aluminum, with:
 - a. Din Rail, Upper 12" 35MM X 15MM, yellow chromate steel Phoenix Contact NS 35/15 PERF 2000MM
 - b. Din Rail, Lower 6" 35MM X 15MM, yellow chromate steel Phoenix Contact NS 35/15 PERF 2000MM
 - c. Terminal Block, Service Entrance, L,N,G ground plate, Marathon 1103
 - d. Circuit Breaker, Service Disconnect, 1A Single Pole, Altec, 1G1UM
 - e. Surge Suppressor, 120 VAC, L/G, N/G, 70KA, Citel DS72RS-120
 - f. Terminal Blocks, DIN, L, N, G, Protected Power, Altec, CTS47U
 - g. Receptacles, two, duplex 120VAC, 15A in handy box with cover, CR15-W