

NOTES

1. CABINET IS CONSTRUCTED FROM .125" THICK 5052 H-32 ALUMINUM AND IS POLE MOUNTED.
2. CABINET HAS A FRONT AND REAR DOOR SWITCH BRACKETS AND A DUAL 4" REMOVABLE FAN PLATE .
3. CABINET HAS DOUBLE THICKNESS REINFORCEMENT CHANNELS ON THE INSIDE BOTH SIDES AND A SOLID BOTTOM FOR POLE MOUNTING (POLE MOUNTING BRACKETS ARE SHIPPED LOOSE).
4. BOTH DOOR HAVE LOUVERS WITH A 10" X 16" METAL AIR FILTER WITH LOUVER COVER , A 3/4" PAD-LOCKABLE STAINLESS STEEL HANDLE WITH THREE POINT LATCHING , A #2 LOCK , A TWO POSITION DOOR STOP , THREE STAINLESS STEEL HINGES PER DOOR , DOCUMENT POUCH BRACKETS AND TOP GASKET RETAINER ,AND IS SEALED WITH CLOSED CELL NEOPRENE GASKET .
5. CABINET HAS A 21" W X 20" DEEP 19" EIA RACK WITH A PULL OUT DRAWER , ADJUSTABLE RACK MOUNTED SHELF . TWO LAMP / DOOR SWITCH BRACKETS
6. ALL HARDWARE IS STAINLESS STEEL .
7. CABINET IS RATED 3R AND IS UL LISTED .



Southern Manufacturing
 150 Hope Street
 Longwood, FL 32750
 ph: 407-894-8851
 fx: 407-831-1508

MATERIAL: 5052H-32 ALUMINUM .125"

FINISH:

NAME	DATE
LAB	10/12/12
DRAWN By:	
CHECKED:	
MFG APPR:	
Cust APPR:	

SOUTHERN MANUFACTURING CO.

P/N: CA-30X24X24-SUBMITTAL

SUBMITTAL DRAWING

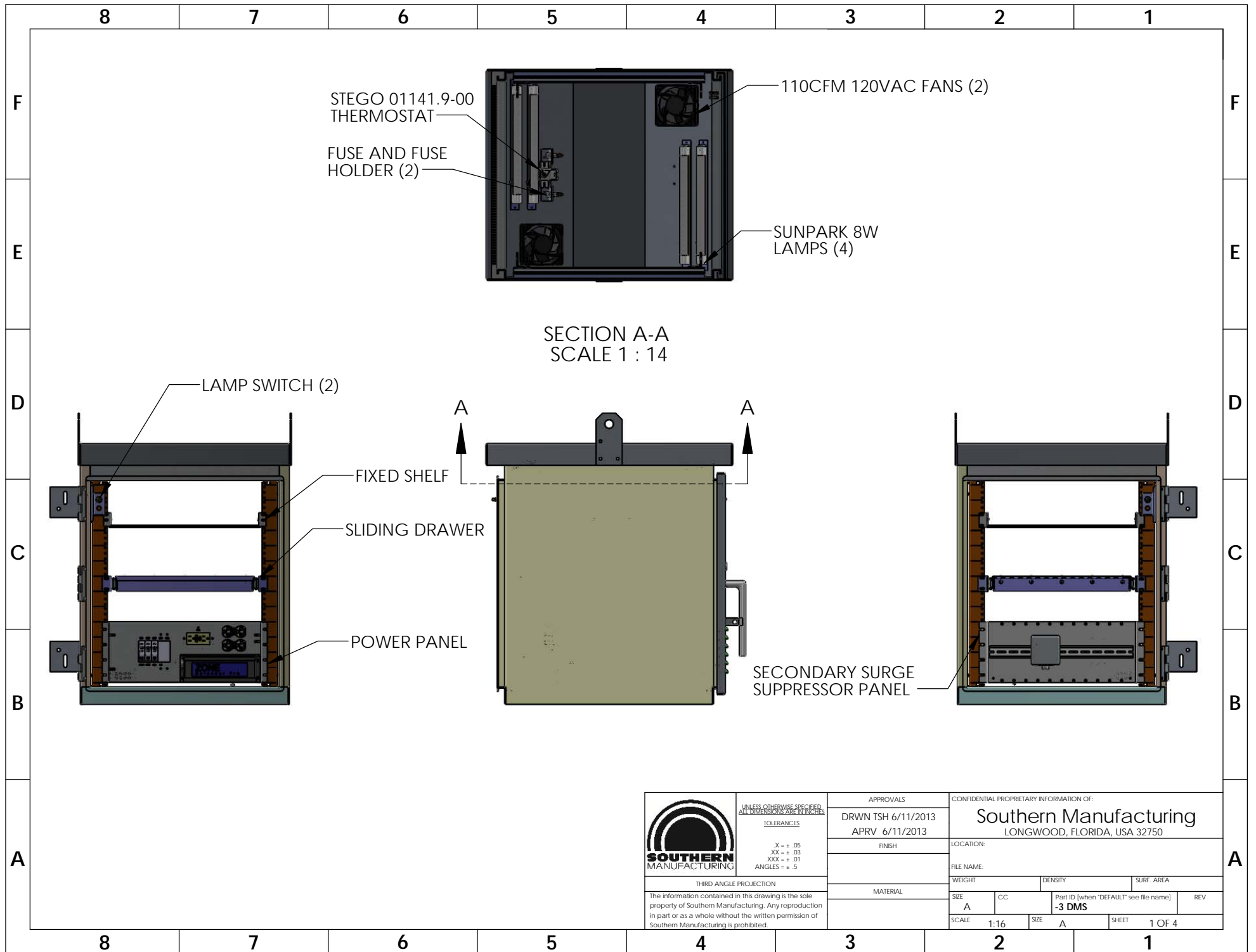
Scale: 1:16 Sheet 1 of 1


Rev: 0

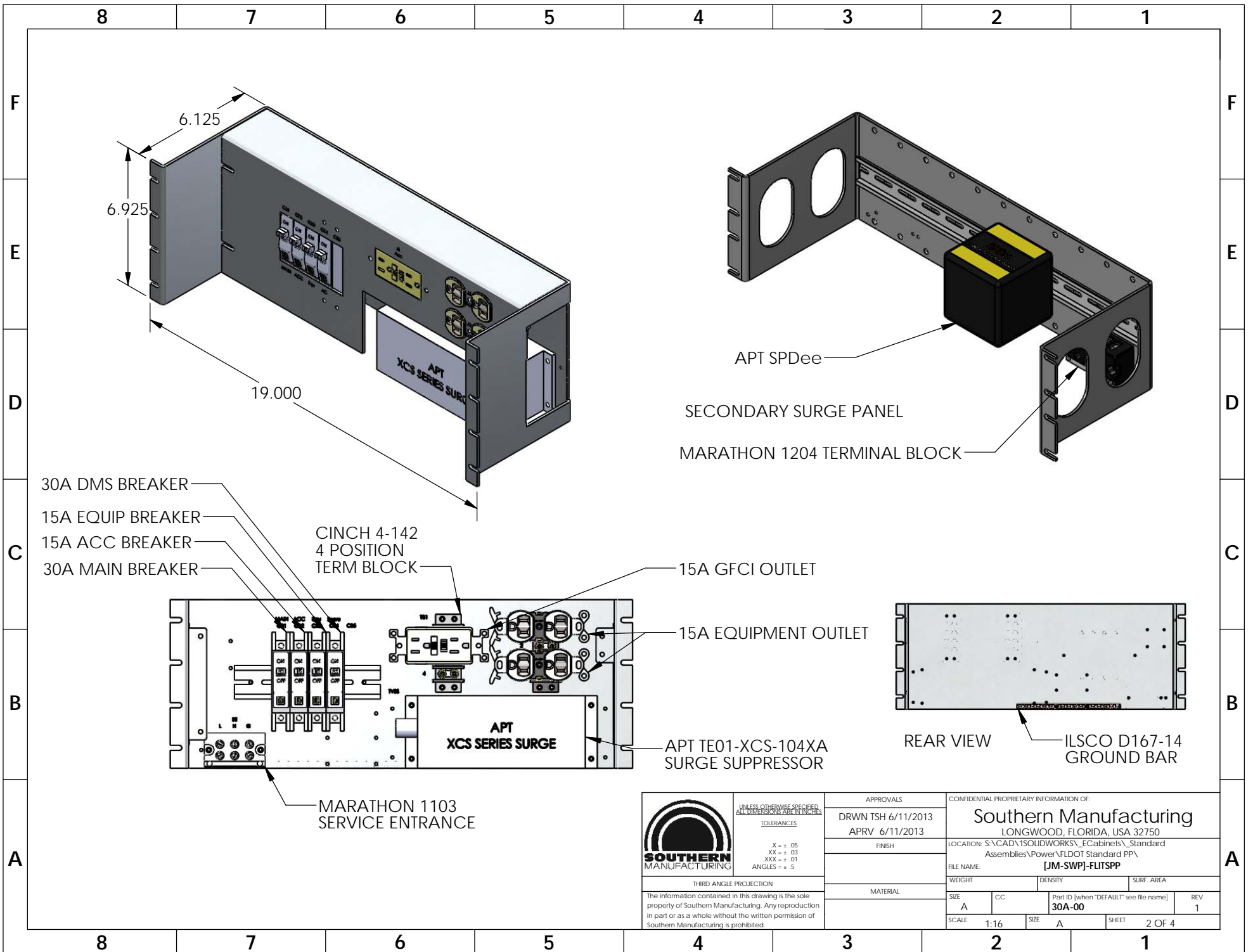
SIZE **A**

PROPRIETARY AND CONFIDENTIAL

The information contained in this drawing is the sole property of Southern Manufacturing. Any reproduction in part or as a whole without the written permission of Southern Manufacturing is prohibited.



 <p>SOUTHERN MANUFACTURING</p> <p>THIRD ANGLE PROJECTION</p> <p>The information contained in this drawing is the sole property of Southern Manufacturing. Any reproduction in part or as a whole without the written permission of Southern Manufacturing is prohibited.</p>	<p>UNLESS OTHERWISE SPECIFIED, ALL DIMENSIONS ARE IN INCHES.</p> <p>TOLERANCES</p> <p>.X = ± .05 .XX = ± .03 .XXX = ± .01 ANGLES = ± .5</p>	<p>APPROVALS</p> <p>DRWN TSH 6/11/2013 APRV 6/11/2013</p>	<p>CONFIDENTIAL PROPRIETARY INFORMATION OF:</p> <p>Southern Manufacturing LONGWOOD, FLORIDA, USA 32750</p>
	<p>FINISH</p>	<p>LOCATION:</p>	
	<p>MATERIAL</p>	<p>FILE NAME:</p>	
	<p>SCALE 1:16</p>	<p>WEIGHT</p> <p>DENSITY</p> <p>SURF. AREA</p>	
<p>SIZE A</p>	<p>CC</p> <p>Part ID (when "DEFAULT" see file name)</p> <p>-3 DMS</p>	<p>REV</p>	<p>SHEET 1 OF 4</p>



UNLESS OTHERWISE SPECIFIED,
ALL DIMENSIONS ARE IN INCHES.

TOLERANCES

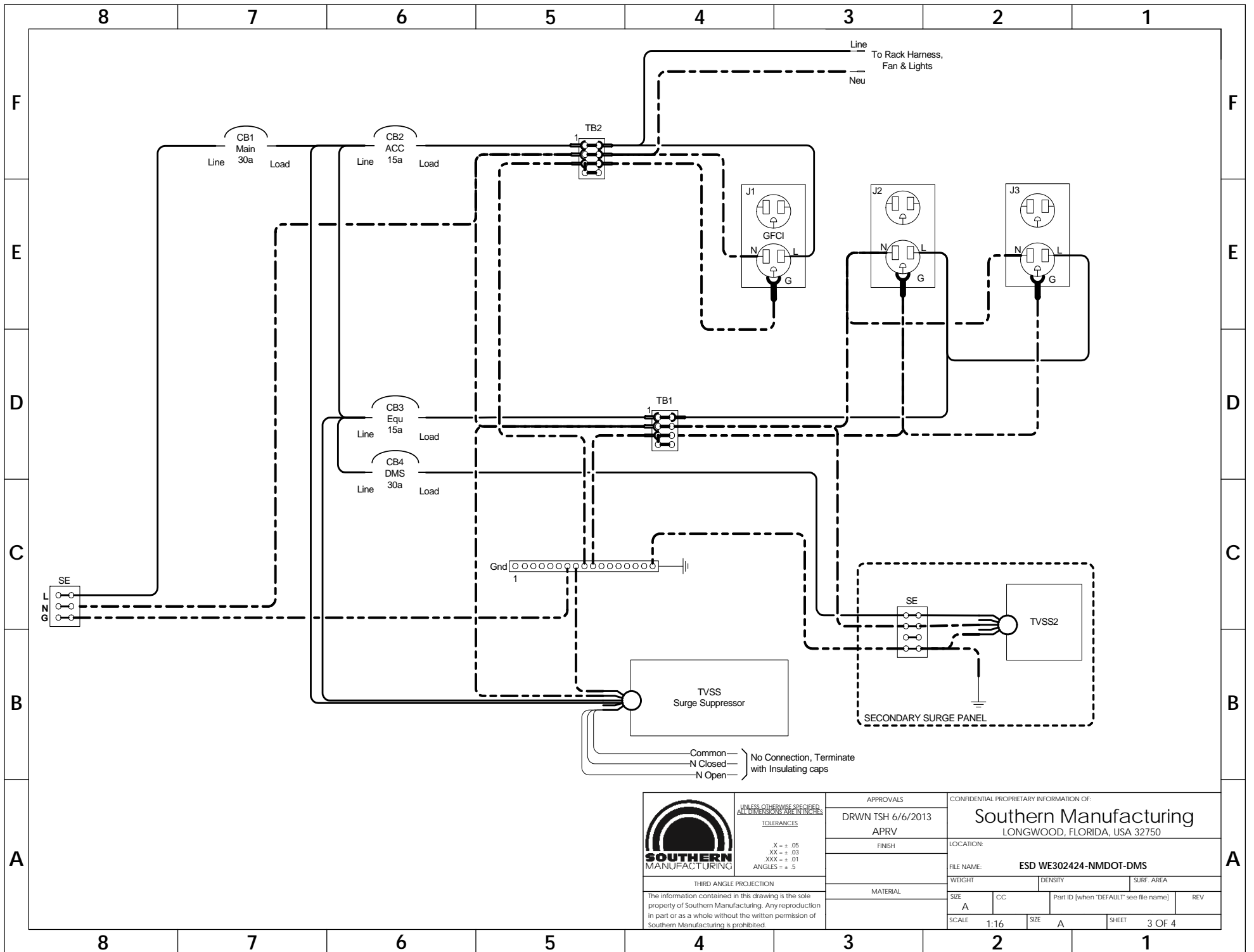
.X = ± .06
.XX = ± .03
.XXX = ± .01
ANGLES = ± .5

THIRD ANGLE PROJECTION

The information contained in this drawing is the sole property of Southern Manufacturing. Any reproduction in part or as a whole without the written permission of Southern Manufacturing is prohibited.

APPROVALS	
DRWN TSH 6/11/2013	APRV 6/11/2013
FINISH	
MATERIAL	

CONFIDENTIAL PROPRIETARY INFORMATION OF:			
Southern Manufacturing			
LONGWOOD, FLORIDA, USA 32750			
LOCATION: S:\CAD\1SOLIDWORKS_ECabinets_Standard			
Assemblies\Power\FLDOT Standard PP\			
FILE NAME: [JM-SWP]-FLITSP			
WEIGHT	DENSITY	SURF. AREA	
SIZE	CC	Part ID (when "DEFAULT" see file name)	REV
A	30A-00	30A-00	1
SCALE 1:16	SIZE A	SHEET 2 OF 4	



UNLESS OTHERWISE SPECIFIED,
TOLERANCES ARE IN INCHES:

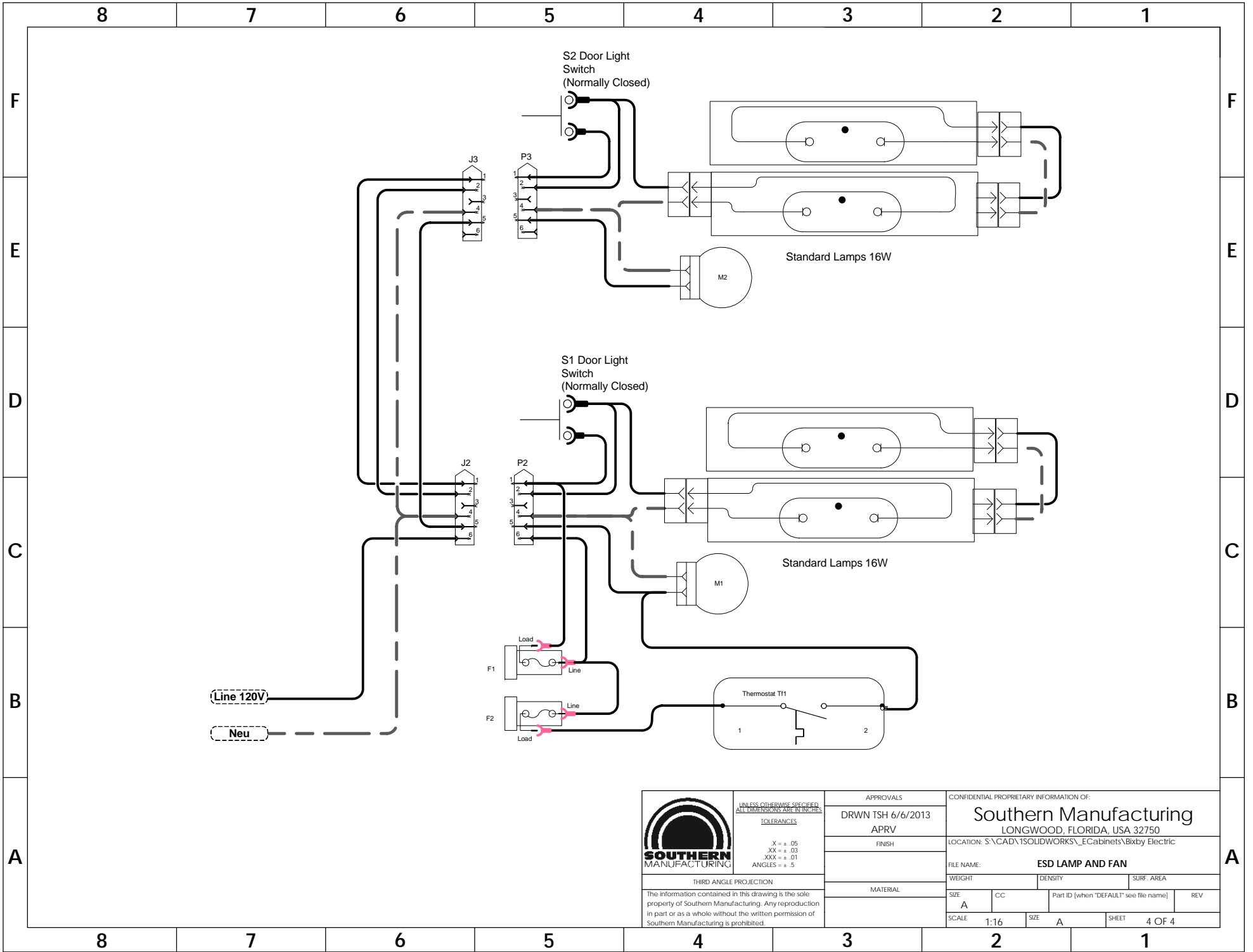
.X = ± .05
.XX = ± .03
.XXX = ± .01
ANGLES = ± .5


THIRD ANGLE PROJECTION

The information contained in this drawing is the sole property of Southern Manufacturing. Any reproduction in part or as a whole without the written permission of Southern Manufacturing is prohibited.

APPROVALS	
DRWN TSH 6/6/2013	APRV
FINISH	
MATERIAL	

CONFIDENTIAL PROPRIETARY INFORMATION OF: Southern Manufacturing LONGWOOD, FLORIDA, USA 32750			
LOCATION:			
FILE NAME: ESD WE302424-NMDOT-DMS			
WEIGHT	DENSITY	SURF. AREA	
SIZE A	CC	Part ID (when "DEFAULT" see file name)	REV
SCALE 1:16	SIZE A	SHEET 3 OF 4	



 <p>SOUTHERN MANUFACTURING</p> <p>THIRD ANGLE PROJECTION</p> <p>The information contained in this drawing is the sole property of Southern Manufacturing. Any reproduction in part or as a whole without the written permission of Southern Manufacturing is prohibited.</p>	<p>UNLESS OTHERWISE SPECIFIED, ALL DIMENSIONS ARE IN INCHES.</p> <p>TOLERANCES</p> <p>.X = ± .05 .XX = ± .03 .XXX = ± .01 ANGLES = ± .5</p>	<p>APPROVALS</p> <p>DRWN TSH 6/6/2013 APRV</p> <p>FINISH</p>	<p>CONFIDENTIAL PROPRIETARY INFORMATION OF:</p> <p>Southern Manufacturing LONGWOOD, FLORIDA, USA 32750</p> <p>LOCATION: S:\CAD\1SOLIDWORKS_ECabinets\Bixby Electric</p>	
	<p>FILE NAME: ESD LAMP AND FAN</p>	<p>WEIGHT</p> <p>DENSITY</p> <p>SURF. AREA</p>	<p>Part ID (when 'DEFAULT' see file name)</p> <p>REV</p>	<p>SCALE 1:16</p> <p>SIZE A</p> <p>SHEET 4 OF 4</p>
	<p>MATERIAL</p>	<p>SIZE A</p> <p>CC</p>		