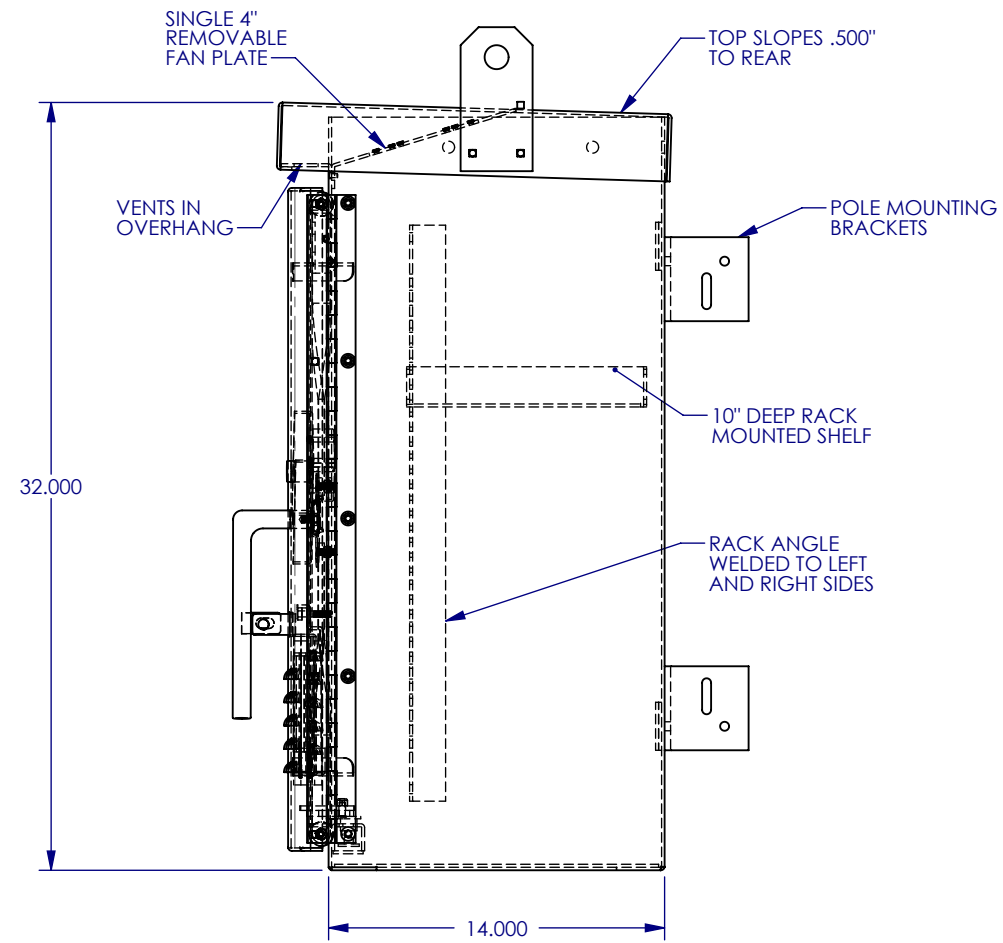
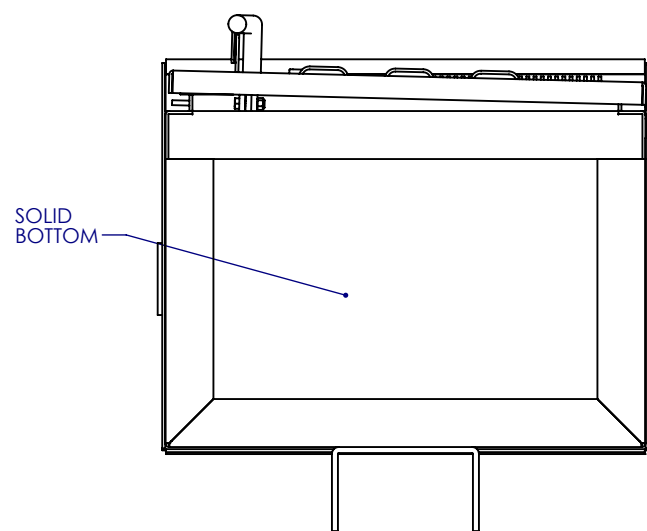


**FRONT VIEW**




**RIGHT SIDE VIEW**



**BOTTOM VIEW**

**NOTES**

1. CABINET IS CONSTRUCTED FROM .125" THICK 5052 H-32 ALUMINUM AND IS POLE MOUNTED.
2. CABINET HAS TWO 19" EIA RACK ANGLES WELDED TO THE LEFT AND RIGHT SIDES WITH 10" DEEP RACK MOUNTED SHELF .
3. CABINET HAS A DOOR SWITCH BRACKET AND A SINGLE 4" REMOVABLE FAN PLATE.
4. CABINET HAS .250" THICK REINFORCEMENT PLATES ON THE INSIDE REAR WALL AND A SOLID BOTTOM FOR POLE MOUNTING.
5. DOOR HAS LOUVERS WITH A 6" X 12" FIBERGLASS AIR FILTER WITH LOUVER COVER , A 3/4" PAD-LOCKABLE STAINLESS STEEL HANDLE WITH THREE POINT LATCHING , A #2 LOCK , A THREE POSITION DOOR STOP , A CONTINUOUS STAINLESS STEEL HINGE , AND IS SEALED WITH CLOSED CELL NEOPRENE GASKET .
6. CABINET HAS TWO LIFT EYES.
7. ALL HARDWARE IS STAINLESS STEEL .
8. CABINET IS RATED 3R AND IS UL LISTED .

 <p><b>SOUTHERN MANUFACTURING</b></p>	<p>UNLESS OTHERWISE SPECIFIED ALL DIMENSIONS ARE IN INCHES</p> <p><b>TOLERANCES</b></p> <p>.X = ± .05 .XX = ± .03 .XXX = ± .01 ANGLES = ± 1.0</p> <p>THIRD ANGLE PROJECTION</p> <p>PROPRIETARY AND CONFIDENTIAL</p> <p><small>The information contained in this drawing is the sole property of Southern Manufacturing. Any reproduction in part or as a whole without the written permission of Southern Manufacturing is prohibited.</small></p>	<p>APPROVALS</p> <p>DRWN LAB 8/18/2014 APRV 8/18/2014</p> <p>FINISH</p> <p>MILL</p> <p>MATERIAL</p> <p>.125" 5052H-32 ALUMINUM</p>	<p>CONFIDENTIAL PROPRIETARY INFORMATION OF:</p> <p><b>Southern Manufacturing</b> LONGWOOD, FLORIDA, USA 32750</p> <p>LOCATION: S:\CAD\ISOLIDWORKS\PROTRONIX\ FILE NAME: <b>CA-32X20X14-SUBMITTAL-3</b></p> <p>WEIGHT LBS    DENSITY    SURF. AREA</p> <p>CC    Part ID (when "DEFAULT" see file name)    REV</p> <p><b>DEFAULT</b>    00</p> <p>SCALE 1:12    SIZE B    SHEET 1 OF 1</p>
--	--	--	--